



COUNTRY CALL



VOL 23.1

NEWSLETTER OF

February 2012 – March 2012

THE ADELAIDE COUNTRY MUSIC CLUB INC.

www.acmc.org.au Club Patron ...Trev Warner

WITH CO-OPERATION FROM THE SLOVENIAN CLUB

THE ADELAIDE COUNTRY MUSIC CLUB INC. PRESENTS

SUNDAY February 5th 2012 - show 12.30 to 4.30pm

DOORS OPEN 11am (or earlier if set up)

Heartland, Craig Giles & Kinta plus Trev Philbey

Catering will be available 12 noon – 2 pm
sandwiches - cakes - fruit platters

Entry:- ACMC members and other Country Music Club Members:- \$5.00, all others \$7.00

SUNDAY March 4th 2012 – Show 12.30 to 4.30pm

DOORS OPEN 11.00 am (or earlier if set up)

Mustang Country

Catering will be available 12 noon – 2 pm
sandwiches - cakes - fruit platters

Entry:- ACMC and other Country Music Club Members:- \$5.00, all others \$7.00

Coming Attractions

April 1

Bernie & the Bandits plus Amber Joy
Poulton

May 6

The Hoffmans

June 3

Brian Letton & Cactus Martens

July 1

Lee Brocky and Outback
Overdrive

President's Report

HOW YA GOIN FRIENDS?

Well here we are another year has come and gone. Our Christmas show was a beauty with Peter Coad and the sisters and Jim Hermel, it was a great show. Moving to the next show in 2012 with Murray Mac and True Grit plus Deidre Reed and Nathaniel O'Brien it was another great show, we had more people than we expected.

I would like to thank Wombat for his Raffle donations during the past year and for a man that spends most of his life in a wheel chair nothing will stop this great man from venturing into new things like dancing on our huge dance floor, this makes me feel that nothing is impossible for this man.

Thanks to our great committee and volunteers for their support and work over the past year also thanks to our great lady Lorraine Wakefield for her superb work arranging all those great artists to come to our Club and perform. This takes a lot of phone calls and sleepless nights. Well moving on to

Our 23rd birthday show we will be having Craig Giles and Kinta plus Heartland. DON'T FORGET to RENEW YOUR MEMBERSHIP if you have not done so already, this is a must so you can be involved in the best Country Music Club in ADELAIDE.

Well there's no more to write about so cheerio for now.

KEEP IT COUNTRY, your president

Russell Byrne



The Adelaide Country Music Club Inc., operates from
the SLOVENIAN CLUB ADELAIDE
at 11 LaSalle St, Dudley Park (off Pym St.)

For information about The Adelaide Country Music
Club write to:
PO Box 307 MODBURY NORTH SA 5092
or contact any of the committee personnel listed
below

Committee Members

PRESIDENT:	Russell Byrne	8283 1565
VICE PRESIDENT:	Evonne Rayson	0450 151 479
SECRETARY:	Bryan Sparks	8396-0575
TREASURER:	Merv Jackson	8298 7643
ENTERTAINMENT:	Lorraine Wakefield	8365 6315
PUBLICITY:	Ian Fisk	8296 3350

GENERAL COMMITTEE:

Raelz E. Gebhardt	Tarlee Schultz
Dianne Smith	Bev Jones
June Sparks	Rob Smith

CATERING CO-ORDINATOR:

MEMBERSHIP OFFICER: Raelz
8260 1013

www.acmc.org.au

'COUNTRY CALL' IS THE NEWSLETTER OF
THE ADELAIDE COUNTRY MUSIC CLUB INC.
A MONTHLY PUBLICATION EDITED BY THE
PUBLICITY OFFICER

Advertising in this newsletter is available at the
following rates:

Full page (approx 175mm x 260mm)	\$40.00
Half Page (approx 130mm x 175 mm)	\$20.00
Quarter Page (approx 85 mm x 130mm)	\$10.00

Actual size may vary slightly, depending on orientation
and layout of adjacent articles.

Items submitted for advertising should be original to
ensure the best possible reproduction – the Club accepts
no responsibility for the quality of reproduction.

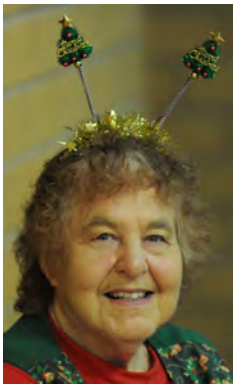
All articles for publication are to be submitted to the
Secretary by post, or to a Committee Member, to
ensure subject matter is appropriate and of interest to
our members. The committee reserves the right not to
include any material that it considers is not appropriate.
Material for publication should be submitted early so
it can be discussed at a committee meeting prior to
inclusion. Committee meetings are held on the 2nd
Monday of the month.

**VIEWS EXPRESSED ARE NOT NECESSARILY
THOSE OF THE EDITOR**

ADDRESS YOUR ARTICLE/ADVERT TO:

'NEWSLETTER'
THE ADELAIDE COUNTRY MUSIC CLUB INC.
PO BOX 307
MODBURY NORTH SA 5092
or info@acmc.org.au

LORRAINE'S ROUND-UP - December 2011



We had a great year of country music in 2011.

A big thank you to all bands and artists, without them there would be no music.

I hear a lot of venues interstate have gone blues and jazz and use recorded music. Please help artists and bands who have CDs. With the modern technology people seem to just download music. Buy CDs when

you see the people live at clubs etc.

On with the show. What can one say of Peter Virginia and Lynette Coad, they always do a great show, throwing in some new songs along the way.

Then Jim Hermel, with the girls did a magic set of songs. I am looking forward to September 2012 to have them back again.

James Cruz's first time at the club was very good with his set of songs.

Also along was Father Xmas, what a busy man he was, but still found time to come to the club. Hope you liked our Club pens and calendars. I enjoyed my Xmas day with all of my family at my relatives' house at Hove.

I hope everyone enjoyed their Xmas.

Now on to 2012, hope everyone enjoys the programme we are putting together.

Bye for now

Lorraine

A Tamworth facebook post from Virginia "Very proud of my brother Peter Coad!!!! Three TSA Awards tonight, "Country Song Of The Year", "Country Ballad Of The Year", and "Comedy Song of the year"!!!!!! Well done!!!!!!" - (TSA is Tamworth Song Writers Association)



Peter Coad, Virginia Coad-Hermel, Lynette Coad and Jim Hermel at our December show



Left:- James Cruz at our Xmas show



Right:- Wombat cutting our Xmas cake (baked by Joy Champion - thanks Joy!)



Lots of people dressed up for our Xmas show

LORRAINE'S ROUND-UP - January 2012

Here we are at the start of another year. I was surprised to see so many people attend on the second Sunday when there were lots of other events on. Thanks to all that came.

Murray Mac and True Grit did a great show. They didn't have Jay Tobin on keyboard and vocals on the day, but still had a great sound.

Our special guests. Deidre Reed firstly was a bit nervous, but did a good job. She would like to come back again now she has worked out what our people want to hear.

Nathaniel O'Brien, what can one say about this loveable young man, he knows what people want to hear and he gives his all. Thanks to you both. I hope Tamworth is good for Nathaniel (note Ian heard via a facebook posting on Jan 22 that Nathaniel "Omgsh!!! Unbelievable I just won 5 sections and the overall at Manilla competition!!!! On cloud nine!!!" Later he advised that "I just won the 2012 Junior Aristocrat Entertainer of the Year".

What a surprise for me when my son came along with my two granddaughters. Georgia has now mastered the

walking frame, going around the hall saying hello to people and with modern technology videoing people dancing etc. sister Isabella kept a watch on her. They had a good time! Their dad jumped on the stage and got me to sing because they had only heard me on stage a couple of times. I was very nervous and had no chord chords but Murray Mac took control and it all worked out well. See photos below.

Murray had recently had surgery near his eye, they cut across his cheek, but he said he felt okay. Dot looked well after all her health problems.

That's all for now, Bye

Happy New Year to All, Lorraine





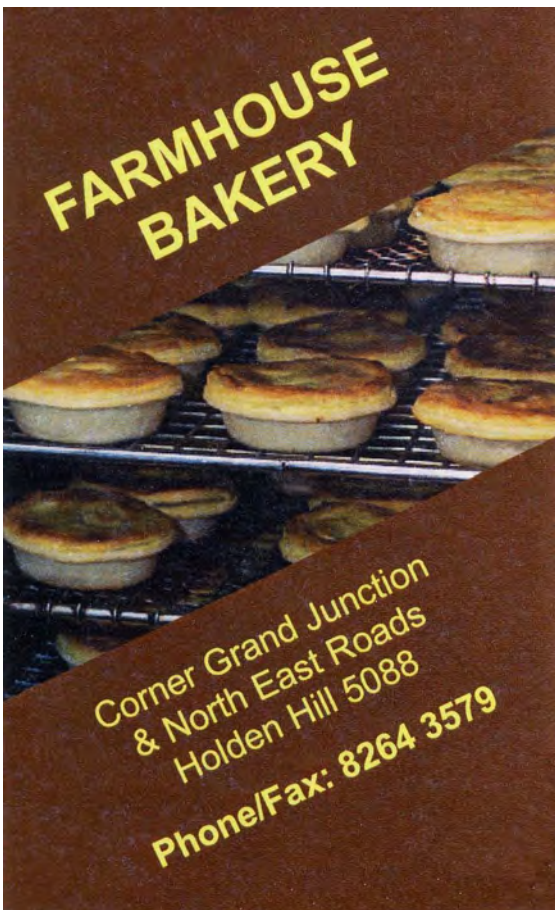
Murray Mac and True Grit at our January show. In the photo are Kevin Bergen, Simon Ranger, Bobby Craig, Murray Mac and John Turner Snr. It was not the lineup mentioned in the last Country Call. Some of the regulars were not available!



Left:- Nathaniel O'Brien at our Jan. show



Right:- Deidre Reed at our Jan. show



Lic. No. 154322



LEAKING TAPS



**HARD TO TURN
DRIPPING TAPS
- FIXED QUICKLY -**

<p><i>Kitchen Taps</i></p>	<p><i>Laundry Taps</i> — { <i>Washing Machine</i> <i>Wash Trough</i></p>	
<p><i>Bathroom Taps</i> — { <i>Shower Basin</i> <i>Bath</i></p>	<p><i>Toilet Cisterns</i> — { <i>Repair</i> <i>Replacement</i></p>	<p><i>Dishwasher Connections</i></p>

See our MOBILE TAP SHOP - "WE COME TO YOU"
We carry a wide range of new and modern tapware ready to install immediately.

Phil's Tapfix

Call Now!  **0418 287 286**

• NO CALL OUT FEE • PENSIONERS RATES

MODBURY PRESS



The Birthday Wishes for February and March

Barbara Bakkelo, Richard Beswick, Beryl Brooksby, Vyvyan Buck, Maxine Burman, Robert Burman, Paul Byrne, Russell Byrne, Rhonda Byrne, Doug Chandler, Lyell Dugan, Robin Ellbourn, Pat Ellingham, Raelz Gebhardt, Hartley Green, Thelma Green, Ron Hincks, Ann-Marie Holt, Lorna Jackson, Allan Lee, Steve Liley, Peter Loveder, Albert Martyn, Ronald McRae, Patricia McRae, Neil Mitchell, Shirley Mitchell, Warren Myers, Barbara O'Daniel, Leona Pengilly, Kevin Perry, Trevor Philbey, Mel Pressley, Pamela Price, Andrew Reed, Rosemary Schulz, Len Searles, Maurice Tuncks, Joan Vivian, Lorraine Wakefield, Heather Walters and Gordon Weston.



Beryl, Vyvyan, Maxine, Robert, Russell, Rhonda, Doug, Robin, Pat



Raelz, Hartley, Thelma, Ron, Lorna, Allan, Albert, Neil



Shirley, Warren, Barbara, Leona, Trevor, Mel, Andrew, Len, Maurice, Gordon

Sick List.

Merv Jackson's recovered from pneumonia. ok but was ill for our last meeting with a stomach ailment, he has recovered from that but now requires cataract surgery! Things are looking up, they will soon have an addition to the family!



Terry Sheehan is recovering from his hip op.(not heart as in the last Country Call)

Nola Trenerry has been in hospital again.

Shirely Mitchell has been unwell, good to see her at the January show.

Elwyn Arnold has been unwell.

Barbara O'Daniel has been in hospital. Good to see her out and about again.

Best wishes to the above and all others not well.

Condolences to Robert Ince on the loss of his wife Joan.

Tarlee Schultz is celebrating six years with her transplanted heart and lungs.

Welcome to our new Club Members

Kev and Judith Robinson, John Deane, Kay Deane, Joan Vivian, Jim Phelan; Mary Benson, Deidre and Andrew Reed



Left:- Barbara O'Daniel at the WCMC on Australia Day.



Right:- Rosemary Schulz at the same place.

If your photo has not appeared here this or earlier months it's maybe because your birthday is not known to the Publicity Officer, he hasn't found you at a meeting or you haven't advised him your birthday is coming up! You can even send in your own photo

Maxine Burman is still hanging on but now restricted to bed or a wheelchair. She and Robert wish to thank all those who have rung and sent cards and letters. We are all thinking of you Maxine.

Thanks to all for their sympathy cards, phone calls and words on the loss of my sister-in-law and member of the Club, 93 year old Audrey Moule. She loved country music. I chose some songs to be played at the funeral service. Thanks again. *Lorraine Wakefield*

Anyone going the Port River Cruises organized by Ross Daly can pay for the cruise at our February club day; otherwise other arrangements will have to be made for payment before the trip.

February Show - Craig Giles and Kinta backed by Heartland

There was a detailed profile of Craig in the Feb-Mar Country Call last year. Please refer to it. While over this way he will also be at the Victor Harbor Bowling club on Friday Feb 3, Castle Entertainment Centre (used to be called the British Working Mens Club) Saturday Feb 4, and on Wed Feb he will be at the Robertstown. From February 19th to March 6th he will be on a Country Music Cruise of Australia's Top End and Bali! He will also be at the Lameroo Country Music Festival on the 28th and 29th of April. He is joining with John Howie for a Music Tour of America October 6th to October 30th this year.

Check his website for more details. (<http://www.craigiles.com>) for more information. Above are Craig and Roz at Lamaroo in 2011.



Kinta has been touring with Craig for over a year now. I first saw her at the LBS studios in Tamworth January in 2011 and later at the Lameroo Country Music Festival later in the year. There isn't much information on her Myspace site, (set up in 2006, but last login 2010!) There is not much more on her Facebook page! (Lives in Finley, New South Wales is from Geelong, Victoria and was born on 31 December, her Facebook address and email address suggest she may have been born in 1979!) Your publicity officer should have emailed her asking for a few more details, but didn't get around to it in time for this Country Call! The photo on the right was taken at Lamaroo in 2011. *Ian Fisk*



Heartland were last at our Club in Sept of 2010. Prior to that they were at the Club in 2008. Band details on Heartland are in Country Calls in those years. (check our website for those Country Calls if you can't find your copies or check Heartland on the Country Music SA's website.)

Right :- Vince Wegener, Dave Schache, Darryl Eckert and Kevin Bergen



February guest artist Trevor Philbey

Whilst music has always been a major part of his life (always got a song going round in the head, or re-arranging a song) it frequently took a back seat to other issues, farming, truck driving, agri-politics, raising a family, etc.

In March 2006 he enrolled in a 12 month course at the School of Audio Engineering and completed it with a credit in May 2007. Along with his guitar playing, over many years in many bands long since gone, this new outlook on the music/audio scene is giving him a new lease on life.

Trevor is known as a solo artist and has been playing solo for many years in the Mallee and more recently in the Barossa Valley. He has a collection of guitars which allows him to vary his style and gives him the opportunity to play in many different genres of music. His love of music and the guitar in particular drives him to achieve a sound which is distinctly his own. His playing style has been

influenced over the years by such greats as Chet Atkins, Les Paul, Hank Marvin to name a few.

He has set up a project studio at his home in Evanston, for small recording sessions, using ProTools software and associated equipment and is gaining a reputation for his attention to detail in the recording scene.



Trevor has set up a PA system using all new high quality components. such as a Midas Verona console, JBL and EAW powered speakers, and Klark Teknik and dbx outboard rack gear, with a wide selection of mics to cover most requirements. The system will cater to medium sized venues and provide exceptional quality sound. Page 7

Around the Traps . . . Other Venues

Railroad Country Music Club SA Sea Rescue Squadron Barcoo Road, West Beach 1-5pm	19 February Sun 18 March Sun	The Blackhats Carole Sturtzel
Kilburn RSL Country Music Functions 2 Way Street, Kilburn 8349 6694 1-5pm	26 February Sun 25 March Sun	Midnight Special Kindred Spirit
Willaston Country Music Club Willaston Football Clubrooms, Gawler River Rd, Willaston 12 to 5pm	4 March - Sun	Charlie McCracken Band
Naval Association of Port Adelaide 35 Quebec St Port Adelaide	3 rd Sun every month 1.30pm	Billy Dee and friends - walk ups very welcome and encouraged
Other Events Coming Soon		
Gawler CM Club Workshop, Anglican Parish Hall, 26 Cowan Street, Gawler	1 st Sat each month	Play, Sing, Jam, Have Fun! 12pm to 5 pm
Blackwood RSL, 1 Brighton Pde	1 st Wed every month	Jay J Shannon and Winchester 6.30 - 9pm
Gawler Country Music Club Inc. Open Mike all welcome 2 nd & 4 th Sat	2 nd and 4 th Sat every month	Phil 8287 8020
Chu's Restaurant, 40 Unley Road Unley (opposite BoHo)	2 nd Tues every month	Jay J Shannon Duo
Blackwood RSL, 1 Brighton Pde	3 rd Sat every month	Winchester featuring Jay J Shannon Country Cabaret
Hillbilly Hoot Ali & the Hoot Live from the stables,	Every Monday evening 8 - 9pm 48 Nelson Street, Stepney Three D Radio live on air (93.7FM) plus streaming on the web	
Plympton & Glenelg RSL 464 Marion Rd, Plympton Park	Every Thursday 6 - 8.30pm	Regeneration (Julia Williams, Malcolm Ham- mond and Harold Aistrope) dinner/dance
The Whitmore Hotel corner Morphett St and Whitmore Square, Adelaide		many country/bluegrass bands on Sundays check the Country Music SA gig guide!
Willaston Country Music Club Willaston Football Clubrooms, Gawler River Rd, Willaston	Feb 11 Sat 6-11pm	Ian List and his Sidekicks guests Fil Galantomos ELVIS TRIBUTE plus Bernie Scott on Sax and vocals plus Ian List 2012 CD launch
Dave's Place - Wellington	Feb 10-12 Fri-Sun	Des Morgan, Kathy Chaplin, Jimmy Chaplin, Graeme Hugo plus many more
S.E.C.M.A. Mt Gambier Music Ute & Rig Muster, Mt Gambier McDonald Park Oval and East Gambier Sportsman's Club	Feb 11 th Sat	Lucky Star, Rodney Vincent, Cameron Mason, Melody Feder, Mark Hannig, Sandra Humphries, Melanie Weistra, Tracy Allen, Christy & Jason Wallace and Allan Webster
Lake Charlegrark CM Marathon	Feb 18-19 Sat-Sun	James Blundell, Paul Costa, Amber Lawrence, Jayne Denham, The Hoffmans, Graeme Hugo, Wildcard, BC Boys
The Mount Compass Country Music Muster @ the Old Bank Cafe Lawns 26 Main St, Mount Compass	Feb 18 Sat 5.30-10pm	Campfire Country and guest artists all profits to the RFDS
Frances Folk Gathering	Feb 24-26	many!
Cowell Ute Muster, Cowell	Mar 9 - 11 Fri-Sun	Paul Costa, Sandra Humphries, Graeme Hugo, Andrew Hugo, Wild Card Band, Grant Luhrs, Candice & Nadinne, Fine Form, B.C Boys and, Cruisers note Lindsay Waddington & Jamie Davies entertaining on Fri night

For full details of all Country Music Gigs in SA join Country Music SA and receive Preludes including the gig guide. Catch Ian Fisk at a meeting (he always has application forms and a receipt book!) or ring Ian on 8296 3350. More up-to-date continuously updated details are on the website. (www.countrysuicsa.com.au)!

The Club Billboard ... February & March



Barossa Country Music Club

www.saccm.com/bcmc

At the Nuriootpa Bowling Club

Enquiries: Phone Natalie (08) 8523 1957



Sunday, 12 February, 11am – 4pm

Heartland & Billy Dee

Sunday, 11 March, 11am – 4pm

*Murray Mac & True Grit with guest
artist Angela Easson*



Southern Country Music Club

www.saccm.com/scmc

Lockleys Bowling Club

46 Rutland Ave, Lockleys 2nd Sunday

Enquiries: Phone Darrell (08) 8381 7622



Sunday, 12 February, 1pm – 5pm

Graeme Hugo with Compact Country

Sunday, 11 March, 1pm – 5pm

*The Blackhats with special
guest Ryan Cornish*



Gawler Country Music Club

www.gawlercountrymusicclub.com.au - 3rd Sunday

At the Munno Para Bowling Club

Cnr Curtis and Main North Rds, Munno Para

Enquiries: Phone Keith Warren (08) 8255 8920



Sunday 19 February, 12pm – 4pm

Des Morgan and Mustang Country

Sunday 18 March, 12noon – 4pm

City Cowboys



Murray Bridge Country Music Club Inc.

www.saccm.com/mbcmc 4th Sunday

At Imperial Football Club, Johnstone Park

Enquiries:- Brian Spargo (08) 8535 4317



Sunday 12 Feb, 11am – 4pm

Compact Country

Sunday 25 March, 11am – 4pm

City Cowboys

Local Links

Adelaide CM Club (That's us!)
Country Music SA Inc.
Kilburn RSL Country Music Functions
Northern Country Music Association of SA Inc.
Port Augusta & District's Music Club
Railroad County Music Club
South East Country Music Association
Willaston Country Music Club

www.acmc.org.au
www.countrymusicsa.com.au
www.saccm.com/kilburnrsl
www.saccm.com/ncma
www.saccm.com/padcmc
www.saccm.com/railrcmc/railcmc.htm
www.saccm.com/secma
www.willastoncountry.com

March Show band:- Mustang Country

Meet the band:-

Honi - Vocalist

Honi has been involved in country music for quite a while. She has won several competitions and performed at Tamworth and The S.A. Champion of Champions. Her strong voice enables her to sing a wide range of music.

Martin - Drums / vocals

Martin has played drums since the 60s and plays in several local country bands. His voice is well suited to singing the country songs he loves and he also sings good harmony.

Brenton - Guitar / backup vocals

Brenton started playing guitar when he was 13. His cousin said it would only be a “nine day wonder”. Over 50 years later he is still waiting for the nine days to arrive

Willem - Bass guitar / Vocals

Willem took up playing bass as he had been playing guitar for a while and wanted a new challenge. His tasteful bass lines compliment any song and his harmony lines fill out any song

The Club was contacted by the Port Adelaide Enfield Council who offered to promote the Club during the Adelaide Fringe. Our March show with Mustang Country is in the Fringe Program! Hopefully some new country music enthusiasts will attend.

Errol - Guitar / vocals

Errol has only recently joined the band but he has already made his mark with his playing and singing. His instrumentals will get any foot tapping and he adds a 4th lead singer to the band.



We are all looking forward to playing at the Adelaide Club in March.

Please come up and say “G’day”. We all love making new friends.

See you there. (sent by Brenton)

Thanks Pam Fisk and Raelz for proof reading Country Call and to Russell and Rhonda who helped in folding, taping and posting it.

Thanks also to all the contributors to this issue.

Young Barbara O’Daniel will be the pillion passenger on another motor bike ride on her February birthday. Enjoy your birthday and the ride Barbara!

Len Wakefield Memorial Fund

Subject to certain conditions, the purpose of the fund is to assist younger talent with proven ability: a) in entering talent quests throughout Sth. Aust., Mildura and Tamworth, b) by payment or part payment of professional tuition, and c) towards the cost of a musical instrument. The fund is administered by the ACMC committee with

expenditure limited to the interest from capital invested, with all payments made to the appropriate body and NOT to the awardee. Annually an awardee is chosen at an event deemed suitable by the Full Committee by a judging panel consisting of three suitably qualified ACMC committee members. Contributions to the fund, which may be made to the club treasurer at any time will be acknowledged in the club newsletter.

Don’t forget that if you have not already renewed your ACMC membership, the fee is due March 1st. A renewal form is included in this Country Call.

PLEASE SHOW YOUR MEMBERSHIP CARD WHEN PAYING THE ENTRANCE FEE!

More photos of most of our club meetings are on our website www.acmc.org.au. Past Country Calls (mostly in colour) from 2006 are also there.

Please save the club having to print, fold and post your Country Call by downloading your COLOUR copy from our website. Please send an email to info@acmc.org.au and ask to be taken off the mailing list. You will be sent an email advising when the next issue is available to download.

CLUB MUSTER - others shown in gig guide

Club	Where	When	Contact
South East CM Assoc	RSL Bowling Club, Jubilee Hwy, Mt Gambier	1 st Sunday	Melanie Weistra 8724 8133
Pt Augusta & Dist M Club	PO Box 3247, Pt Augusta 5700		Michael Godfrey 0432 328 244
Northern CM Assoc	Afford Road, Port Pirie		Roma Sampson 08 8633 4417
Country Music SA Inc.	5 East Street, Burra, SA 5417		1300 309 550

COUNTRY ON RADIO (please check the stations' websites for the latest information, more info on www.sacm.com)

Station	Day/Time	Program	Presenter
Radio Adelaide - FM 101.5 www.radio.adelaide.edu.au & digital	Sat 6 - 9am	Country Breakfast	Wally Sparrow
	Sun 6 - 8pm	New Country Cafe	Fred Payne & Tammy Wellman
	Sun 11 - Noon	Bluegrass Unlimited	Bill Lawson
5AN 891 AM www.abc.net.au	Sat 10pm – 2am	Saturday Night Country	Felicity Urquhart
	Sun 5.30 – 10am	Australia All Over	Ian McNamara
ABC Digital Country	24hrs every day		
Coast FM 88.7 www.coastfm.com.au	Mon 2 – 4pm	My Kinda Country	Trevor Dawson
	Tues 2 – 4pm	The Open Paddock	Ray Pannach
	Wed 2 – 4pm	Kicking Country	Mike Parkes
	Wed 2am - 6am	Pyjama Country/Memory Lane	Frank Roberts
	Thurs 2 – 4pm	On The Border	Judith Waugh
	Fri 2 – 4pm	Gospel and Country	Maurie Huxley
	Sat 2 – 4pm	Country Round-Up	Chris Hill
	Sun 2 – 4pm	Orange Blossom Special	Christine
3D FM (93.7) Adelaide www.threedradio.com	Sat 11 am - 1pm	Yodel and Country	Ali Oakly/Lone Tony Joe
	Mon 8pm to 9pm	Live Hillbilly Hoot	
Great Southern FM 90.1 Victor Harbor www.radio901.com.au	Fri 6 – 9pm	Great Southern Country	
	Sat 11am – 3pm	Country Music	Merv & Glad
	Sun 12 noon – 3pm	Great Southern CM Show	
	Tues 12 noon - 2pm	Tuesday Country	Barbara Spence
Triple B FM 89.1 Barossa Radio www.bbbfm.com	Mon 6 – 9am	Country Bacon & Eggs	Bruce Klemm
	Mon 6 – 9pm	Make Mine Country	Bruce Glasson
	Wed 9am to 12 noon	My Kind of Country	Milky Johnson
	Thur 12 to 2pm	Totally Country	Honi
	Fri 6 - 9am	Country Bacon & Eggs	Bruce Klemm
5RPH AM 1197 www.rphadelaide.org.au	Mon 10.30 – 11.30pm	Roots 'n' All Blues and Country	
RiverCity FM (88.0) Murray Bridge	24 Hour/7 Day Country Music		www.rivercityfm.com.au
5YYY FM 107.7 Whyalla Com. Radio	Tues 12 Noon – 4pm	Country YYY	John Taylor, and others
Trax FM 105.1 Port Pirie	Mon to Fri, 4am – 8am	Country Music	
	Thurs 8pm – 11pm	Country Music	Jimmy Johnston
KIX FM 90.7 Kingscote, Kangaroo Island	Mon & Thur 7.30 am -9.am	Country Music	Merilyn Henderson
Flow Fm check their website for coverage and frequencies - Coober Pedy to Mt Gambier	Sat & Sun 2 to 5pm Sun 6 to 7pm	Country Mix God's Own Country	Don Taylor http://flowfm.com.au/ 8565 3151
Easyfm 87.6	24 Hour/7 Day Country Music		http://www.easyfm.com.au/ Port Broughton
Radio 5EFM Victor Harbor & South Coast 89.3 FM and Strath & Yankalilla 94.7	Thur 8 - 10pm Sat 9 - 11.30am Sat 1 - 4pm Sun 6.30 - 9am Sun 10.30 - 12noon	Country Gospel Country Ho Down Australian Country Music Mainly Country Breakfast Country All Over	Malcolm & Pat Rohrlach Betty Pannell Neil & Helen Pratt Malcolm Rohrlach Daph Hill
Kix Country	Berri/Renmark - 1557 AM Clare - 87.6 FM Port Linclon - 887.6 FM	24 hr Country also streaming on line	

Read Me ... Read Me ... Read Me ... Read Me ... Read Me

You are reminded that our shows are on licensed premises, and you are **NOT** permitted to BYO grog/softies to the shows.

Please consider your own safety and the safety of others, and take appropriate care wherever you are (and especially around the dance floor).

Our bands and guest artists perform for our enjoyment. Please consider the rights and comfort of others and keep the noise down during performances.

The Club is run by volunteers who work hard to make our Club one to be proud of. Give them your support.

Unless noted otherwise, all pictures by Ian Fisk

**‘COUNTRY CALL’
NEWSLETTER**

